

GEOSCIENTIST LAZ KATONA PRACTICING WHAT HE PREACHES ON THE COOPER PEDY OPAL FIELDS

Laz highlights how opal miners can use government datasets to identify areas that may have a higher probability of hosting opal-bearing ground.

Laz Katona is a prominent Australian Geoscientist, and former opal miner who served as a core project leader for the state's massive Gawler Craton Airborne Survey 2017 - 2019.

This program captured unprecedented high-resolution magnetic and radiometric data over South Australia.

Katona, renowned for his work with the Geological Survey of South Australia, is highly regarded for his GSSA research on effectively utilising Australia (GSSA). He bridges the gap between traditional prospecting and modern technology by applying open-source spatial data and GIS to opal exploration. Effectively utilising open geoscientific data and digital mapping will assist in locating prospective opal fields in the Australian Outback.

Among his credits Katona has decades of practical outback experience, notably a self-employed opal miner, prospecting and mining in the historic Mintabie opal fields of South Australia between 1985 and 2000, including operating heavy machinery, shaft sinking, and analysing rough ground for pockets of colour.

After his mining career, Katona transitioned into the academic and public sectors. He earned formal qualifications in spatial science and data, bringing direct field credibility to the Department for Energy and Mining (DEM).

Katona authored the landmark methodology, "Searching for Opal through Open Data", first presented at the 2020 Opal Symposium held at Cooper Pedy. Laz Katona was a key speaker at the Symposium where he set about to bridge the gap between old-school bush prospectors and high-tech government frameworks to secure the future of Australian gem exploration.

This work teaches traditional miners how to replace guesswork with modern GIS, remote sensing, and open-source public geoscientific data and is a must-read for old and new opal miners. It focuses on freely available geological information that can be accessed through SARIG and related DEM resources.

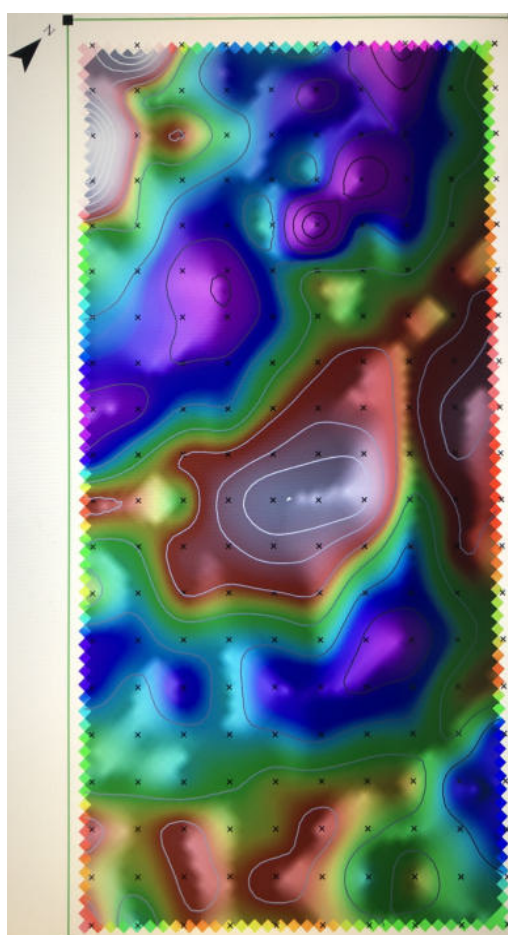
https://www.energymining.sa.gov.au/_data/assets/pdf_file/0005/684212/Laz_Katona_presentation_Opal_Symposium_2021_DEM_OpalSymposium_2021.pdf

As reported in the Cooper Pedy Regional Times, September 2021, Page 1: The South Australian Mines and Energy Department has been a big player in encouraging opal miners to seek out new opal-bearing areas.

Laz highlights how opal miners can use government datasets to identify areas that may have a higher probability of hosting opal-bearing ground.



Since retiring from DEM, Laz and Deb Katona are Cooper Pedy Opal Miners, and are taking full advantage of the technology brought to light by the airborne magnetic surveys that took place across the Gawler Craton between Feb 2017 and July 2019



In this section, Laz explains that "Microgravity is a geophysical technique used to map near-surface changes in the density of rocks and cover."

"The potential of microgravity surveys to assist opal exploration at Cooper Pedy is due to the weathered nature of opal-bearing sandstone, making it a less dense rock than the other rock types present."

"Microgravity may therefore permit the differentiation between blue ground and good sandstone, or between thick and thin jasper cover."

"The technique should work best where there is consistent thickness of cover over the opal bearing sandstone, so reconnaissance drilling with an auger drill is recommended before commencing a microgravity survey, to find a suitable area, then further drilling to test the results."

LEFT: Micro-gravity image of a 100m x 50m area, 2023.

Warmer colours show higher density areas and demonstrate that the technique is capable of producing a pseudo density map.

Used in an optimal area, this technique may be able to delineate highly weathered bulldog shale, the host for opal in Cooper Pedy



Above: Cooper Pedy Gem Trade Show 2026. Laz and Debbi with a customer.

In addition to their opal mining interludes at Cooper Pedy, Laz and Debbi operate an online manufacturing business called Laszlo's Opal and Jewellery. Their aim is to focus totally on the jewellery business in the near future.

The business crafts and sells genuine in-house-produced, Australian opal jewellery including rings, pendants and inlay pieces.

ABOUT US

Coober Pedy Regional Times became a FREE Newspaper in 2006 and increased its distribution to 5,000 hard copies + and simultaneously provided a **Free Online Digital Newspaper**, to accommodate the new digital era.

Distribution covers a vast area including World Wide Web; nearby communities and towns, social media, website and mailing lists. By 2026 the Social Media following alone totals over 20,000 and rising.

The COOBER PEDY REGIONAL TIMES is 'WORLD WIDE'

READ Newspaper FREE online at:
<https://cooberpedytimes.com/>

Editor - Margaret Mackay

PO Box 10 Coober Pedy SA 5723

Ph: (08) 8672 5920

Email: editor@cooberpedytimes.com
<https://cooberpedytimes.com/>

Advertising Rates

Display \$6.85 Classi \$8.55

MAILING LIST

Send an email to be included on an emailing list

Next PUBLICATION DATE

Friday 26 June 2026

DEMOCRACY... *the prime value of journalism is that it imposes transparency, and thus accountability, on those who wield the greatest governmental and corporate power.* ~ Glenn Greenwald, Laura Poitras and Jeremy Scahill

Four pillars of Democracy are:

LEGISLATIVE : The body which makes laws for the state.

EXECUTIVE : Executes and enforces laws.

JUDICIARY : Works to protect laws.

PRESS/MEDIA : The 4th estate of democracy. It informs the public

Media releases may be submitted however there is no obligation on the newspaper to publish any part of it. Media releases are generally one sided so comments may, (or may not) be extracted and used in a related article. **CPRT does not** provide free space for political or business advertising.

Letters to Editor: Can be sent by email where possible and must be relevant to the community. Potentially defamatory comments will be edited or deleted. Letters to Editor need to be signed, but a pen name can be published.

Groups & Sponsorships: You or your group may wish to send a News Article. Aim for a 300 - 500 word story in plain text and a suitable photo/s.

If seeking an Editorial - "Advertorial" or "Special Feature", please enquire about the cost first.

Advertisers may be entitled to editorials








Sponsorship for clubs or community programs is by arrangement.



WEATHER COOBER PEDY

Coober Pedy

Forecast updated at 12:56 pm CST on Saturday 27 June 2026.

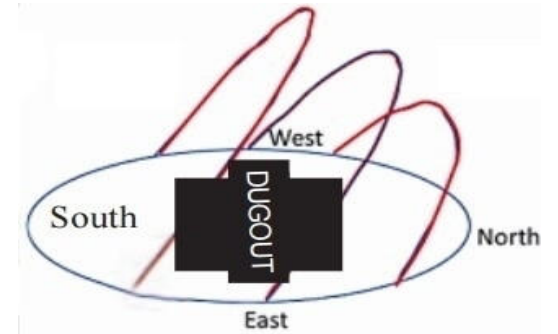
	Sat. 27 Jun	Sun. 28 Jun	Mon. 29 Jun	Tue. 30 Jun	Wed. 1 Jul	Thu. 2 Jul	Fri. 3 Jul
	 Mostly sunny.	 Shower or two.	 Showers easing.	 Partly cloudy.	 Becoming windy. Partly cloudy.	 Mostly sunny.	 Cloudy.
Max. Temperature	18 °C	19 °C	20 °C	22 °C	19 °C	19 °C	17 °C
Min. Temperature		10 °C	11 °C	9 °C	11 °C	8 °C	8 °C

AVERAGE ANNUAL RAINFALL
Approximately 144 mm to 175 mm
(roughly 5.7 to 6.9 inches).

Wettest Month: February is typically the wettest month.

Driest Months: April is generally the driest, though the area experiences low, erratic rainfall throughout the year.

Spring Equinox on September 23



LOCAL SCRIBES

MARGARET Reporter, Coober Pedy been the Editor 2005 and a contributor



news stories, photography, advertising and the coordinating of community contributions.

MACKAY News Resident and Ratepayer has of CPRT since volunteer since the mid 1990s, covering general



Patchy rain at Coober Pedy, early morning.

DISCLAIMER: Opinions and letters published in The Coober Pedy Regional Times are not necessarily the views of the Editor, or Publisher.

The Coober Pedy Regional Times reserves the right to edit or omit copy, in accordance with newspaper policies. Letters to the Editor must be attributed with a name, address and contact phone number - names and town of origin will be printed, or may be withheld at the Editor's discretion. Material is published with the agreement that the contributor takes full responsibility for their submission. During the course of any election campaign, letters to the editor dealing with election issues must contain the author's name and street address (not PO Box) for publication.

Right of reply is always available .

Copyright Notice: All of the content published by CPRT, including articles, photos, images, graphics, advertising, layout, printing plate content and related material, is owned by CPRT, or by other information providers who have licensed their content for use in this publication. Additionally, the entire content of the Coober Pedy Regional Times past and present is copyrighted as a collective work under Australian copyright laws and may not be reproduced without written authorisation. The owner of the collective work is Margaret Mackay

INDEMNITY: Advertising agencies, advertisers and other contributors accept full responsibility for the contents of advertisements and other submitted, signed material and agree to indemnify the publishers against any claim or proceedings out of the publication of such advertisements or material. Provision of material or copy for publication in the Coober Pedy Regional Times Newspaper constitutes acceptance by advertisers, advertising agencies and other contributors of this condition.

Sgt Angus the Coober Station after experience on Lands, and Marla in the West Coast



Sgt Lovelock is previously from Adelaide where he began his career in policing 12 years ago.

Lovelock joins Pedy Police gaining local the APY also 2 years at Far North, and Penong.

MIKE GILLAM writer- who divides his his Art Gallery and his Dugout Mike also for the Alice



is a freelance photographer time between in Alice Springs in Coober Pedy. writes essays Alice Springs News.

JOHN DI raised in the Australian a long-term Coober Pedy. person John is commuter



the entire Far North & East and Outback of South Australia.

DONNA was South Outback and is resident of As a business a regular, along the Far North and Flinders highways and byways, covering the

FINDING OPAL WITH OPEN DATA

How Modern Geological Data Can Help Miners Target New Ground

For generations, opal miners have relied on experience, observation, drilling results and local knowledge to discover new opal fields. Today, those traditional skills can be strengthened with powerful geological datasets that are freely available through South Australia's Department for Energy and Mining.

At the 10th National Opal Symposium, geoscientist Laz Katona presented a practical overview of how publicly available geological information can be used to improve opal exploration. His work demonstrates that modern mapping tools can help miners identify geological patterns associated with known opal fields and potentially highlight new areas worthy of investigation.

One of the first datasets examined was airborne magnetic surveying. The Gawler Craton Airborne Survey was one of the largest airborne magnetic and radiometric surveys ever undertaken. Magnetic data allows geologists to identify fault structures and geological features beneath the surface.

Around Coober Pedy, Katona noted that many existing diggings occur on the north-eastern side of a major north-west trending structure. While magnetics alone cannot directly locate opal, these structural patterns may provide clues about the geological processes that helped form opal-bearing ground.

Radiometric data appears to offer even greater potential for regional opal exploration. Radiometric surveys measure natural concentrations of uranium, thorium and potassium at the surface. Studies conducted around Australia have shown that opal-bearing horizons commonly contain elevated uranium concentrations compared with surrounding rocks. As a result, areas displaying higher uranium levels may serve as useful indicators of potential opal-bearing ground.

The radiometric maps presented by Katona showed elevated uranium concentrations around both Coober Pedy and Andamooka. These anomalies do not guarantee the presence of opal, but they provide a valuable exploration guide when combined with other geological information. Areas displaying stronger uranium signatures may represent extensions of known opal systems or entirely new target areas.

Conversely, areas that are low in radioelement concentrations often correlate with, and are adjacent to intensively mined areas at Coober Pedy, suggesting radioelements may have dissolved and worked their way downward, into areas of intensely weathered bulldog shale, which is the prospective unit for opal formation at Coober Pedy.

Another important tool is digital elevation modelling. By combining topographic data with known depths to opal-bearing levels, it becomes possible to estimate where those same horizons may continue beyond existing diggings.

Katona demonstrated how converting known opal-bearing levels into elevations above sea level allows explorers to project the likely lateral extent of productive horizons. This approach can help miners estimate drilling depths and identify ground adjacent to known fields that may contain the same opal-bearing layers.

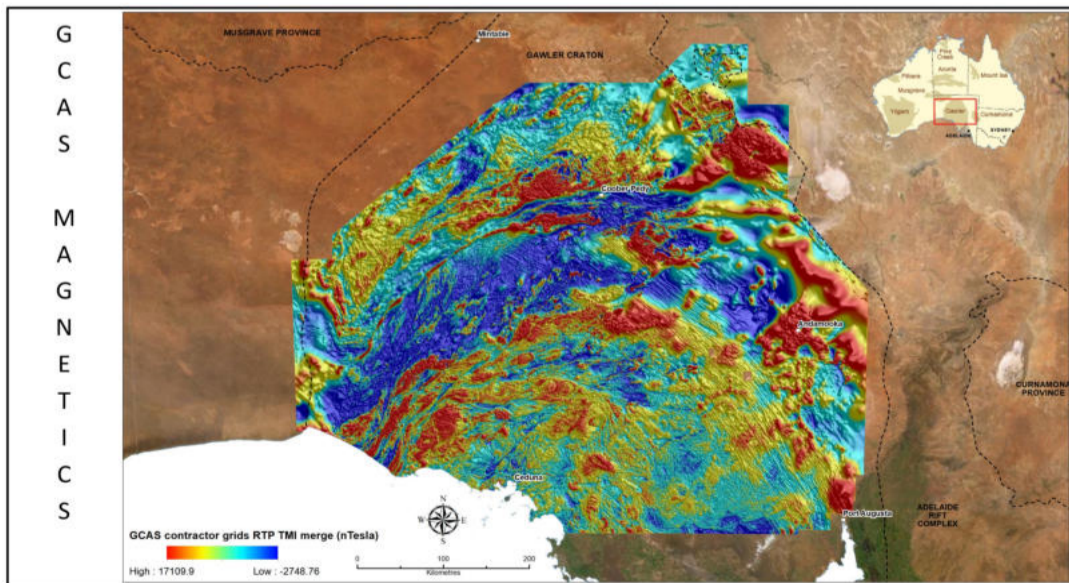
The presentation also highlighted the potential value of resistivity surveys. Resistivity measures how electrical current moves through the ground and can provide three-dimensional information about subsurface geology. These surveys may help identify fault zones, sandstone units and geological features commonly associated with productive opal ground. While large-scale surveys can be expensive, smaller targeted programs may be practical for individual miners or exploration groups.

Looking further into the future, Katona discussed the use of spectral mineral analysis through the HyLogger system. This technology identifies minerals within drill core and rock samples. Minerals such as gypsum, kaolin, alunite and montmorillonite have been recognised within opal field samples and may eventually help geologists develop better predictive models for locating productive opal ground.

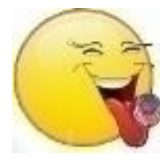
The overall message of the presentation is clear. Modern geological datasets cannot replace experience in the field, but they can significantly improve exploration targeting. By combining radiometric data, elevation models, structural information and historical drilling knowledge, miners can make more informed decisions about where to drill and where to invest their time and money.

Red = Potassium (K)
 Green = Thorium (Th)
 Blue = Uranium (U)

GAWLER CRATON AIRBORNE SURVEY 2017 - 2019



The Gawler Craton Airborne Survey was one of the worlds largest airborne magnetic and radiometric acquisitions. The acquisition program ran from 2017 to 2019 and the final data products were released earlier this year. Magnetic surveys image the magnetic response of iron contained in rocks in the earths crust and are sensitive to minute variations of iron. This results in images that can tell us a lot about fault structures in the earth's crust.



LICKERS

- opal industry news

Active Claims as at

26/06/2026

Andamooka – 161

Coober Pedy – 451

Mintabie – 11

Stuart Creek – 1



Simple Guide to Using SARIG

Radiometric Data for Opal Exploration

- Open SARIG in your web browser; <https://map.sarig.sa.gov.au/>.
- Allow the map to load and zoom into the Coober Pedy district or the area you wish to investigate.
- Open the Layers panel.
- Search for "GCAS" or "Radiometric".
- Turn on the radiometric imagery layers from the Gawler Craton Airborne Survey.
- Look for layers displaying Uranium, Potassium, Thorium or Radiometric Ternary imagery.
- Select the Uranium layer if available. This is the most useful starting point for opal exploration because elevated uranium levels have been associated with known opal-bearing horizons.
- Adjust the layer transparency if necessary so you can see both the geological map and the radiometric colours beneath.
- Compare the uranium anomalies with known opal fields around Coober Pedy, Mintabie, Lambina and Andamooka.
- Look for areas displaying similar uranium responses that occur outside established diggings.
- Turn on mining tenements and opal field boundaries to determine whether the area is available for further investigation.
- Turn on elevation or topographic layers and compare them with known opal-bearing level information.
- Use the Identify tool to examine the radiometric values at specific locations.
- Save interesting locations as bookmarks or record their coordinates for later field inspection.

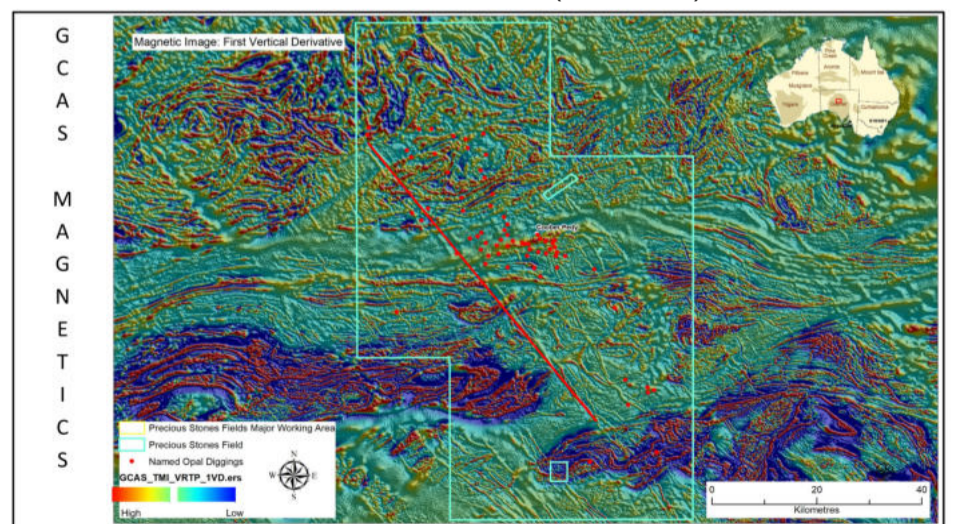
Where elevated uranium responses coincide with favourable geology, known opal-bearing levels, paleochannels or structural features, those areas may warrant further drilling or prospecting.

Remember that radiometric anomalies are exploration indicators only. They do not prove the existence of opal. The greatest value comes from combining radiometric information with geological knowledge, drilling records, elevation data and local mining experience.

The most effective approach is to first identify known productive opal fields on the uranium layer, study the radiometric signature they produce, and then search for similar signatures in nearby unexplored ground.

The key lesson from Laz Katona's work is that many miners already have access to sophisticated exploration tools without realising it. SARIG contains a vast amount of geological information, and the radiometric uranium layers may be one of the most valuable starting points for identifying new opal exploration targets.

COOBER PEDY REGION (DIGGINGS)



This is the vertical gradient of the magnetic intensity and when we zoom into the Coober Pedy Region we can begin to see what appear to be de-magnetised zones that could be interpreted to be paleo-channels and fault structures. I found it interesting that almost all of the Coober Pedy diggings are situated on the north-eastern side of a north-west trending structure, suggesting that this feature may have been related to the formation of the Coober Pedy Mesa. One aspect of the magnetic data is that it is difficult to confidently infer the actual depth of the features we are interpreting, so any working theories about the relationship between magnetics and opal formation may be difficult to validate. Still, there are some features that may be worth following up with drilling.

POLICE REPORT: COOPER PEDY 13/06/26 to 25/06/26
 Anyone with information on the following incidents is asked to call Crime Stoppers on 1800 333 000. You can remain anonymous.

14/06/2026 – On the morning of 14/06/2026, a residential property on Robins Blvd was broken into, and a vehicle parked in the garage was damaged during an attempted theft.

14/06/2026 – On the evening of 14/06/2026, a residential property on Eyre Street was broken into, and a small amount of property was stolen.

14/06/2026 – Overnight, a business premises on Robbins Blvd suffered property damage after unknown persons smashed windows and damaged a door.

15/06/2026 – On the evening of 16/06/2026, a residential premises on Hutchison Street was unlawfully entered, and a 7-week-old blue heeler puppy was stolen.

22/06/2026 – A residential property on Marquardt Rd was broken into by unknown persons, and a number of items were stolen.

PARLIAMENT PASSES LEGISLATION TO SHIFT LOCAL GOVERNMENT ELECTIONS



Laws to move South Australia's next round of council elections to April 2027 have passed State Parliament.

The reforms were developed after a request from the Acting Electoral Commissioner, who expressed concern about the Commission's readiness to oversee this year's local government elections.

The shift will mean the elections are held after the former Australian Electoral Commissioner, Tom Rogers AO has completed his review of the 2026 State Election.

Under the reforms, polling day shifts from November 11 this year to 7 April next year, with subsequent elections to be held every four years from November 2031.

The new date was chosen to enable the Electoral Commission further time to improve processes and recruit staff, while ensuring South Australians have their say and ensuring councils can set their 2027 budgets.

The reforms also mean South Australian voters do not need to take part in two major state-based elections in the same year moving forward.

State Attorney General Kyam Maher said, "It is incredibly frustrating that the challenges faced at the state election have led to this situation."

"The State Government acknowledges that the Parliament has moved the election date, following the Acting Electoral Commissioner's advice that the Electoral Commission was simply not equipped to manage this year's local government elections."

FATAL CRASH ON POST OFFICE HILL ROAD, COOPER PEDY

A man has died after a crash at Cooper Pedy on Thursday.

About 4.15 pm on Thursday 25 June, police were called to Post Office Hill Road after reports of a Toyota station wagon crashing into a mobility scooter.

The man riding the mobility scooter, an 84-year-old local, was taken to hospital in a serious condition however succumbed to his injuries on Saturday 27 June.

Major Crash officers are examining the circumstances of the collision. Road closures were in place but have since reopened.



INVESTIGATIONS ARE CONTINUING, and police ask anyone who may have witnessed the incident or has any CCTV or dash cam that may assist with the investigation to contact Crime Stoppers online at www.crimestopperssa.com.au or call 1800 333 - 000 and quote 166745 – you can remain anonymous.

The man's death is the 56th life lost on South Australian roads this year.

Photo: Road block on Post Office Hill Road on Thursday afternoon.

POLICE ASSOCIATION DELEGATES PASS 'NO CONFIDENCE MOTION' IN COMMISSIONER GRANT STEVENS & DEPUTY COMMISSIONER LINDA WILLIAMS

Police Association of South Australia Tuesday June 23, 2026

Delegates of the Police Association of South Australia (PASA) today passed a motion of no confidence in Commissioner Grant Stevens and Deputy Commissioner Linda Williams.

The motion followed a delegates meeting convened to consider concerns regarding workforce conditions, operational performance, organizational reform and leadership accountability within South Australia Police.

The motion reflects concerns raised by elected delegates — who represent every section of the SAPOL workforce — regarding workforce sustainability, operational effectiveness, staffing pressures, increasing administrative burden, workforce wellbeing and confidence in SAPOL's future direction.

Police Association members represent approximately 95% of SAPOL's sworn workforce.

The no-confidence motion carried by delegates and the supporting reasons:

Police Association delegates No Confidence Motion in Commissioner Grant Stevens and Deputy Commissioner Linda Williams

Delegates note that:

- The District Policing Model (DPM) has been independently assessed by the 2025 BDO Review as "no longer sustainable in its current form", due to structural mismatch between demand, staffing capacity and workload.
- Operational outcomes have deteriorated under the current model, including reduced proactive policing capacity, increased reactive demand and rising workload complexity.
- Excessive administrative burden, expanding HR processes and increasing bureaucratic red tape are materially reducing front-line time, operational effectiveness and workplace morale.
- Workforce retention has declined significantly, with non-retirement resignations increasing from approximately 18% to more than 50% in recent years.
- The 2024 People Matter Employee Survey recorded SAPOL below the public sector average in 22 of 24 categories, including leadership confidence and workforce wellbeing.
- The 2025 PASA members survey shows only 8% of surveyed members believe SAPOL is better off now than in 2015.
- Members continue to report sustained physical fatigue, roster instability, and psychological strain linked to workload intensity and staffing pressure.

Delegates further note that:

- The commissioner and deputy commissioner conceived, implemented and defended the District Policing Model.
 - The same commissioner and deputy commissioner are now responsible for overseeing its redesign following its independent assessment as unsustainable.
 - There remains a persistent gap between executive reporting and front-line operational reality, particularly in relation to workload, staffing capacity and administrative demand.
- Delegates consider that:
- The combined impact of structural model failure, excessive administrative and HR bureaucracy and sustained workforce decline reflects a long-term breakdown in executive leadership.
 - Confidence in the current commissioner and deputy commissioner to restore sustainable operations, reduce unnecessary bureaucracy and rebuild workforce trust has been significantly eroded.

Therefore delegates resolve:

That this meeting of delegates of the Police Association of South Australia declares that it has no confidence in:

- Commissioner Grant Stevens;
- and Deputy Commissioner Linda Williams to lead SAPOL or to restore operational effectiveness, workforce confidence, morale and safe systems of work.

Tuesday June 23, 2026

COOBER PEDY GREEK COMMUNITY CLUB: A LASTING CULTURAL LEGACY IN THE OUTBACK



The Greek Community turn on the traditional style catering for the opal festival crowd on Friday night.

The Coober Pedy Greek Community Club, located on St Nicholas Street, was established in 1979 as a cultural and social hub for the town's thriving Greek population.

During the opal boom of the 1960s and 1970s, Coober Pedy experienced a significant influx of post-war Greek migrants seeking opportunities in the opal fields. At its peak, the Greek community numbered more than 1,000 people, making it the largest migrant group in the town.

As the community grew, local Greek families established both the Greek Community Club and St Nicholas Greek Orthodox Church, creating lasting institutions that preserved their culture, traditions and faith in one of Australia's most remote regions.

Today, the Greek Community Club remains an important part of Coober Pedy's cultural identity. The venue regularly hosts community meetings, science fairs, cultural gatherings and its renowned Friday Night Greek BBQs, welcoming residents and visitors from all backgrounds.

The architecture of the St Nicholas complex reflects both Greek heritage and the practical realities of life in the outback. Built by Greek opal miners, St Nicholas Greek Orthodox Church was excavated directly into a sandstone hillside.

Visitors enter through a modest doorway before descending into the cool underground church. The striking wave-shaped ceiling was carefully carved to distribute structural weight without the need for supporting pillars.

The rough sandstone walls are adorned with religious icons and statues, while concealed lighting highlights the artwork and enhances the atmosphere of the underground sanctuary.

Adjacent to the church, the Greek Community Club Hall was constructed above ground in 1979 using thick insulated masonry designed to withstand Coober Pedy's extreme summer temperatures. Deep window recesses help reduce direct sunlight and maintain a comfortable indoor environment throughout the year.

The significance of the site extends beyond the church and hall. The Greek community also established Coober Pedy's first cemetery within the St Nicholas complex, reflecting the deep roots Greek families established in the district.

At the heart of the club's social calendar is the weekly Friday Night Greek BBQ, a tradition that has continued for decades. Community members gather from 6.00 pm for an evening of food, friendship and conversation. Meals are prepared over open coals and served buffet style, creating an atmosphere that reflects the warmth and hospitality for which the club is known.

These weekly gatherings also provide an opportunity for older generations of Greek miners to share stories and experiences with younger residents, thus preserving the history and identity of both the Greek community and the purpose-built town itself.



Local opal miner George Likouresis and friends at dinner



Laz and Debbi Katona having dinner with Jock Riach and Lyn Peake.



Friday night on the eve of the Opal Festival, the Greek Hall welcomed over 200 guests through their doors, serving 160 dinner plates. Patrons danced to the music until the night was over.

The club plays an especially important role during the annual Coober Pedy Opal Festival, the town's premier tourism and community event. During the festival, the club becomes a major culinary and social attraction, serving large crowds of locals and visitors with charcoal grilled lamb chops, pork ribs, chicken wings, traditional Greek salads and tzatziki.

These celebrations draw on a long tradition of Greek "Glendi" festivals. In Greek culture, a Glendi is a joyful gathering centred on food, music, dancing and community spirit.

During the height of the opal boom in the 1970s and 1980s, Coober Pedy's Greek community became renowned for hosting large-scale Glendis. When miners struck valuable opal, it was not uncommon for entire herds of lambs to be purchased and roasted on spits for community feasts that welcomed everyone in town, regardless of background.

While those large-scale celebrations have evolved, their spirit remains alive through the club's involvement in the Opal Festival and its popular Friday night gatherings. Both continue the longstanding tradition of sharing Greek hospitality with the wider desert community.

Another highlight on the club's annual calendar is its Halloween and Fancy Dress Party. The event has become one of Coober Pedy's most anticipated social occasions, attracting families and residents of all ages. Featuring themed costumes, prizes and shared meals, the celebration reflects the club's successful evolution from a migrant community centre into a vibrant multicultural gathering place for the entire town.

More than four decades after its establishment, the Coober Pedy Greek Community Club remains a living symbol of the contribution Greek migrants made to the development of the town. Through its traditions, events and community spirit, it continues to celebrate a rich cultural heritage while bringing people together in the heart of the outback.



Greek Club Friday night pre- Opal Festival



Patrons at the Greek Club enjoying the night out.



The main hall at the Greek Club catered for travellers and locals.





Kipros and Anna Pantelis with Jimmy and Litsa

**Dream big,
 stay proud
 in SA Police**


**Career
 Information
 Session**

Date: Tuesday, 30 June
Time: 6:00pm to 7:00pm
Location:
 Coober Pedy Area School
 7/18 Paxton Road

SOUTH AUSTRALIA POLICE
 SAFER COMMUNITIES

**Government
 of South Australia**

 Scan the QR code to find out about our upcoming sessions



The queue to the BBQ area was long and relentless



Volunteer chefs Nicko, Yanni and Chris



2026 OPAL FESTIVAL STREET PARADE

A Celebration of Opal, Community and Culture



Parade began around 1pm.



Local SAPOL leading the parade

For generations, Easter marked far more than a holiday in Coober Pedy. It signalled the end of the long, harsh summer and the beginning of a new opal mining and tourist season. As cooler weather arrived, prospectors returned to the fields, visitors ventured into the outback, and local businesses prepared for one of the busiest times of the year. Easter being traditionally when the underground churches, museums, shops and tourist attractions reopened after the summer lull.

It was this tradition that inspired the creation of the Coober Pedy Opal Festival in 1989. The festival was established to celebrate the town's unique identity as the Opal Capital of the World while welcoming visitors back for another season of adventure, discovery and community celebration.



Locals enjoying the parade



Emergency Services were all there.

Over the years, the festival has become one of Coober Pedy's best-loved annual events. Street parades, market stalls, live music, sporting activities, opal-themed competitions and family entertainment have attracted thousands of visitors and brought the whole community together.

One of the festival's defining features has always been its multicultural character. Coober Pedy was built by people from many nations who came in search of opal and opportunity. Greeks, Italians, Serbians, Croatians and many other cultural groups have all helped shape the town's character. Their music, food, traditions and hospitality have become an important part of the festival, reflecting the remarkable diversity that continues to make Coober Pedy unlike any other town in Australia.



Historical Society - Who was Minnie Berrington?



Opal Inn "float"

While the festival has evolved over the decades and its timing has changed, its purpose remains. The Coober Pedy Opal Festival is a proud reminder of the town's rich mining heritage, together with the evolution of a unique cultural heritage united by the opal industry, and the enduring optimism that has always defined life on the opal fields.



Coober Pedy Speedway. Brian Frisby in Car 101



Coober Pedy Speedway. Lukey Wood Car 28

OPAL FESTIVAL 2026 STREET PARADE



A great turn out for the Street Parade by the members of Cooper Pedy Speedway



Outback Bar & Grill



Home Hardware/Celebrations/Post Office staff & Float
 Below: Desert Cave Hotel



A big THANK YOU to the Emergency Services and to the business for taking part in the event.



SA Ambulance; Cooper Pedy CFS, and Mine Rescue all participated in the parade.



Local families lined up for the parade

COOPER PEDY TAFE'S FIRST GRADUATION CEREMONY CELEBRATES STUDENT SUCCESS

TAFE SA has celebrated a significant milestone in Cooper Pedy, hosting its first graduation ceremony at the local campus to recognise students who recently completed qualifications through locally delivered training programs.

The ceremony, held on 30 April, honoured graduates from the Certificate III in Early Childhood Education and Care, Certificate III in Community Services, and Certificate III in Individual Support (Ageing and Disability).

The evening opened with a Welcome to Country by Dawn Brown and was attended by representatives from local organisations including the Umoona Community Council, Umoona Tjitji Tjapu Tjuta Child Care Centre, Cooper Pedy Area School and Umoona Tjilpi Tjuta Kanyini Aged Care, alongside TAFE SA staff and industry partners.

The courses were introduced in Cooper Pedy in 2024 in response to local workforce needs and were supported through the Fee Free TAFE initiative, a joint State and Federal Government program that enables eligible students to gain qualifications without tuition fees.

Associate Professor Matthew Leach, TAFE SA's Director of Health and Community Services, said strong partnerships with local industry had helped ensure training opportunities aligned with community needs.

"Industry consultation identified a growing demand for skilled workers in areas such as aged care and early childhood education," he said.

"We've worked closely with local organisations to ensure students can train close to home while building the skills needed for meaningful and sustainable employment in the region."



Congratulations to Shanaka Koralage, Lyn DeCastro, Namrata Namrata, Chloe Simmonds-Clements, Crystal McCormack and Amber McDonald.

TAFE SA presenters were Marg Mibus, Manager Aboriginal Access, Associate Professor Matthew Leach, Educational Manager Kathy Carman, and Educational Manager Mel Beeston.

Umoona Tjitji Tjuta Child Care Centre Director Jodie Iknonomopoulis delivered the alumni address, congratulating graduates and encouraging them to take pride in their achievements.

"This is a beautiful night that should be celebrated, and it's wonderful what TAFE SA is doing in our town," she said.

Graduate Crystal McCormack shared her experience studying the Certificate III in Early Childhood Education and Care, describing the opportunity as life-changing.

After years working in her family's opal mining business, Crystal chose to pursue a career in childcare and said the combination of local delivery and Fee Free TAFE made study accessible for her family circumstances.

"Starting my journey in early childhood education has been one of the best decisions I've made, and being accepted into my Diploma has been a proud milestone," she said.

Certificate III in Individual Support graduate Shanaka Koralage also spoke about the value of having face-to-face training available locally, saying it was a key factor in deciding to enrol.

Guests gathered following the ceremony to celebrate the graduates' achievements, with family members, community representatives, employers and TAFE SA staff coming together to mark the occasion.

The graduation recognised not only the success of individual students but also the growing importance of locally delivered vocational education in building a skilled workforce and supporting essential services across the Cooper Pedy region



Cooper Pedy TAFE Campus Federal Election

Sulforaphane: Staying strong as we age - The Muscle Repair Connection

At the centre of this research is a natural enzyme in our muscles called **NOX4**

Think of NOX4 as the body's internal maintenance manager. When our muscles work, NOX4 helps send signals that tell our cells to repair themselves, build energy, reduce inflammation and strengthen the body's natural antioxidant defences.

The challenge is that NOX4 activity naturally declines as we age, especially if we become less active. When that happens, our muscles can find it harder to repair themselves, leading to weakness, loss of mobility and reduced energy.

The good news is that scientists have found two simple ways to help switch these repair pathways back on.

1.) Move More, Even a Little

You do not need to become a marathon runner or join a gym.

Regular muscle activity appears to be one of the strongest activators of the body's natural repair systems.

Simple activities can help:

- Walking each day
- Chair rises or seated leg extensions
- Wall squats
- Countertop push-ups
- Resistance band exercises
- Light gardening or household work

The key is consistency rather than intensity.



Even small amounts of regular movement can encourage muscles to send the signals needed for repair and renewal.

2.) The Power of Broccoli Sprouts

Researchers have also discovered that a natural plant compound called **sulforaphane** can activate many of the same protective pathways triggered by NOX4.

Sulforaphane is found in cruciferous vegetables such as broccoli, cabbage, kale and Brussels sprouts. The richest source, however, is fresh broccoli sprouts. Young broccoli sprouts can contain many times more of the beneficial compounds than mature broccoli.

Easy Ways to Add Sulforaphane to Your Diet

The simplest approach is to include fresh broccoli sprouts in everyday meals.

Try:

- Adding sprouts to sandwiches and wraps
- Mixing sprouts into salads
- Sprinkling them over scrambled eggs
- Adding them to soups after cooking
- Topping baked potatoes with sprouts
- Mixing them into cottage cheese or yoghurt
- Adding them to tacos, burgers or rolls
- Combining them with lettuce and tomato in a simple lunch salad



What About Broccoli? Regular broccoli is still a healthy choice.

To preserve its beneficial compounds:

- Eat it raw in salads
- Lightly steam for a few minutes
- Avoid prolonged boiling

Overcooking can destroy some of the natural enzymes needed to create sulforaphane.



Juicing & Smoothies. For people who enjoy fresh juices or smoothies, broccoli sprouts can be blended with:

- Apple
- Carrot
- Lemon
- Ginger
- Cucumber
- Celery

A fresh green smoothie can provide a concentrated source of beneficial plant compounds. For best results, consume it soon after preparation.

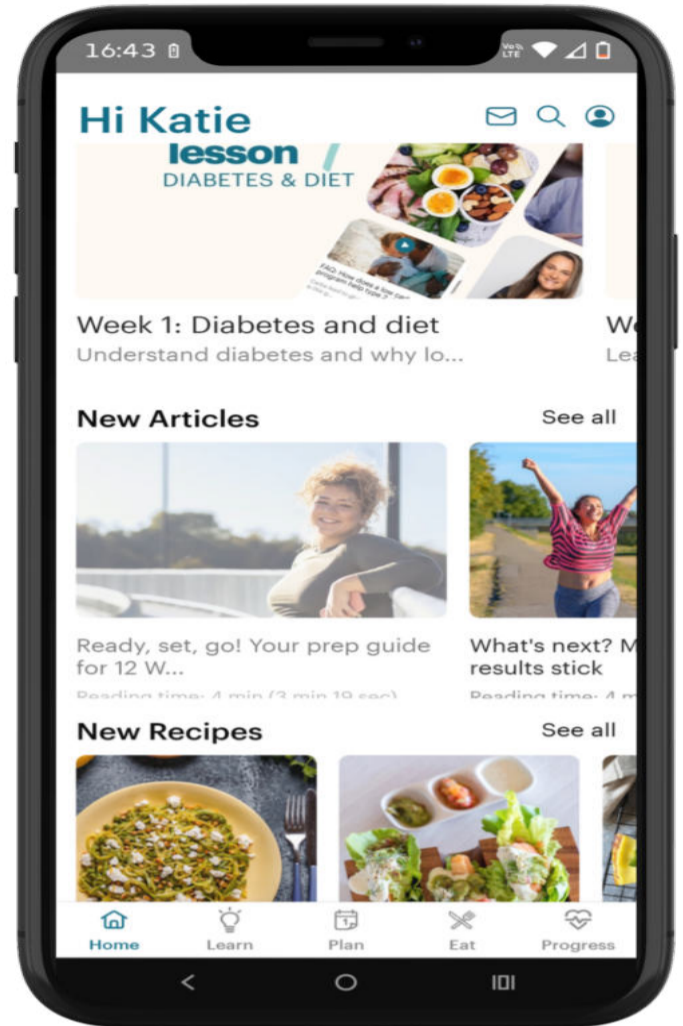


Growing Your Own Sprouts

One reason broccoli sprouts are becoming popular is that they are inexpensive and easy to grow at home. A small jar, some broccoli sprouting seeds and a few minutes of rinsing each day can provide a fresh supply within four to five days. Many people find home-grown sprouts are far cheaper than buying supplements and provide the added benefits of fresh food.

Healthy ageing is not about finding a miracle cure. Research increasingly suggests that regular movement combined with nutrient-rich foods can help activate the body's own repair systems. A daily walk, a few simple strengthening exercises, and a handful of broccoli sprouts on your lunch

Could Your Phone Help Reverse Type 2 Diabetes?



A major Australian study has found that many people with Type 2 Diabetes improved their health through a simple education and nutrition program delivered on a mobile phone.

Researchers from La Trobe University studied participants using the Defeat Diabetes program over a 12-month period and found encouraging results.

The program provides easy-to-follow lessons, nutrition information, recipes and progress tracking designed to help people make healthier lifestyle choices.

The study found:

- 78% improved their blood glucose levels.
- 42% reduced their blood sugar levels below the diagnostic level for diabetes.
- Participants lost an average of 5 kilograms.
- Nearly one in five achieved remission of Type 2 Diabetes without diabetes medication.
- Some participants were able to reduce or stop diabetes medications under medical supervision.

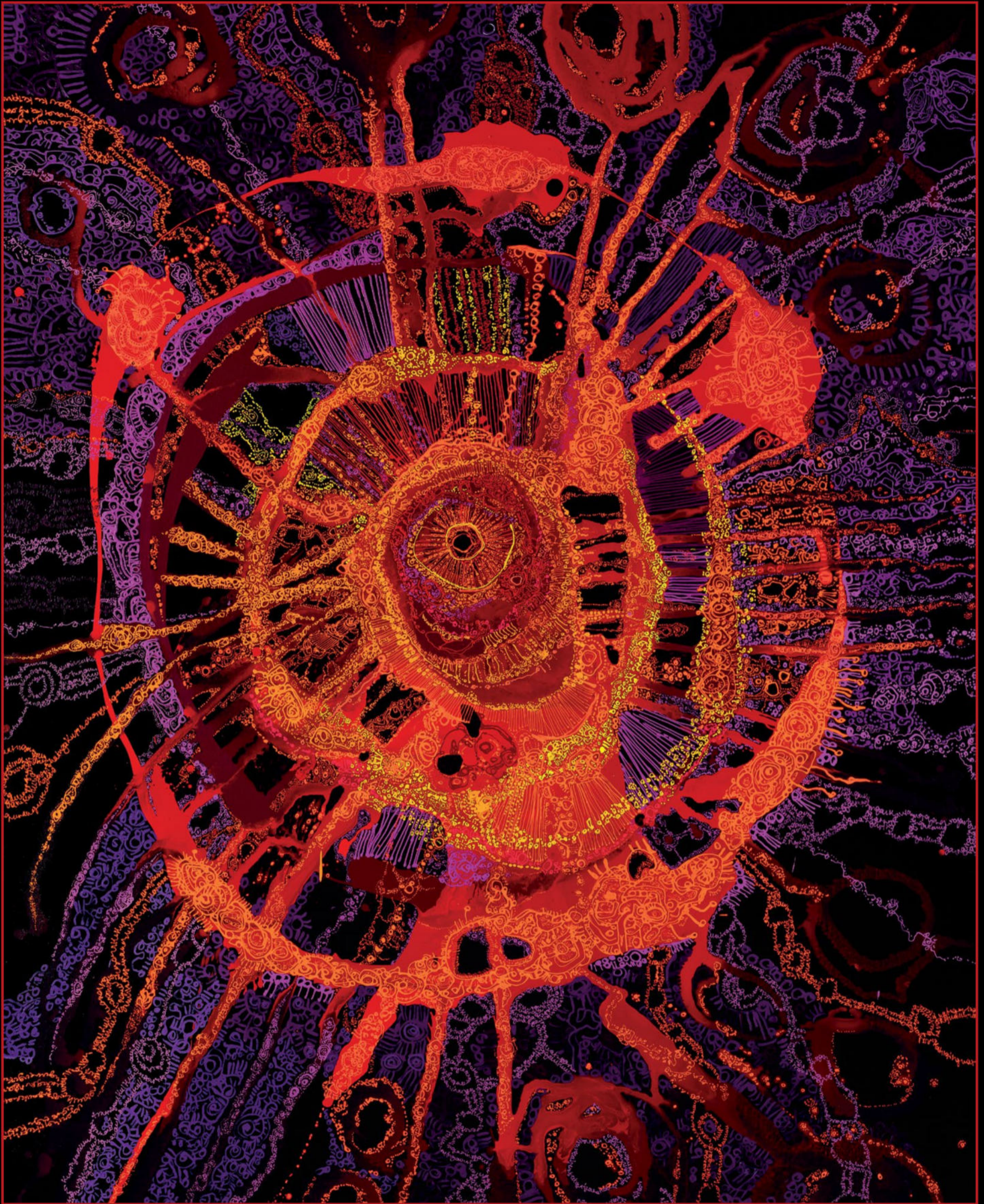
Participant Sladjana Cukanic said she lost 9 kilograms, returned her blood glucose levels to the normal range and gained more energy by changing the way she ate.

Researchers say the findings add to growing evidence that nutrition and lifestyle changes can play a major role in managing Type 2 Diabetes and may help some people reduce their reliance on medication.

With more than 1.7 million Australians living with Type 2 Diabetes, the study highlights the potential benefits of providing practical nutrition education and support through accessible digital programs.

ABOUT THE "DEFEAT DIABETES PROGRAM"

Defeat Diabetes is Australia's only evidence-based, doctor- and dietitian-led digital program that focuses on education and behavioural change, supported by nutrition therapy, to help manage type 2 diabetes. Delivered online and on a mobile app, the program helps people with pre-diabetes and type 2 diabetes understand how to manage their condition through diet. Twelve structured interactive modules guide people into new thinking patterns, supported by practical tools including hundreds of diabetes-friendly recipes, weekly meal plans and resources. **BEGIN HERE** and get your personalised blood glucose action plan <https://www.defeatdiabetes.com.au/>



NAIDOC WEEK
50 YEARS DEADLY
5-12 JULY 2026

Paralpi by Zaachariaha Fielding

Paralpi extends Zaachariaha's acclaimed *Inma* series and reflects a deeply cultural and immersive narrative grounded in Country. The artwork depicts the sounds of *Paralpi*, a significant place just outside Mimili on the eastern APY Lands in South Australia. As Zaachariaha describes, *Paralpi* is a place where people come to embrace and celebrate children, where they are taught by Elders to move and mimic their Clan emblem – for Mimili, this being the maku (witchetty grub).

#NAIDOC2026

#FIFTYYEARSDEADLY

#NAIDOCWEEK

facebook.com/NAIDOC

@naidocweek

@naidocweek



Aboriginal Flag designed by Mr Harold Thomas.



Torres Strait Islander Flag reproduced by kind permission of the Torres Strait Island Regional Council, designed by the late Mr Bernard Namok.



**Coober Pedy Fire Brigade
 SPECIAL AGM
 Wednesday 10 August 2026**

All positions up for vote
 Where: CFS Station
 Start Time: 6pm

POSITION VACANT



Government of South Australia
 Attorney-General's Department

PUBLIC NOTICE

ABORIGINAL LANDS TRUST VACANCY
 pursuant to the *Aboriginal Lands Trust Act 2013 (SA)*

ARE YOU AN ABORIGINAL PERSON INTERESTED IN SUPPORTING ABORIGINAL LANDS TRUST COMMUNITIES?

IF SO, THERE ARE VACANCIES AT THE ABORIGINAL LANDS TRUST FOR TERMS OF UP TO THREE-YEARS

If you have any of the following knowledge, skills, and experience, then please apply:

- South Australian Aboriginal community life and culture generally
- residential community life and culture on Trust Land
- the management and conservation of natural resources
- the management of agricultural and pastoral land
- commercial enterprise development
- property management and development
- ecologically sustainable development and/or
- corporate governance and administration.

Trust members are paid for their time (except public sector employees). Meetings may occasionally be by video or teleconference. It is therefore desirable for nominees to have access to a reliable phone to participate in confidential calls.

For more information about the vacancies, please contact Attorney-General's Department – Aboriginal Affairs and Reconciliation, either by telephone on (08) 7322 7057 during office hours or by email at aboriginalaffairsandreconciliation@sa.gov.au.

If you would like to apply, please write a cover letter describing why you are interested and how your knowledge, skills and experience match with the above criteria. Please send your cover letter with a resume to:

Trust Selection Panel
 Attorney-General's Department
 Aboriginal Affairs and Reconciliation
 GPO Box 464
 ADELAIDE SA 5001

Email: aboriginalaffairsandreconciliation@sa.gov.au

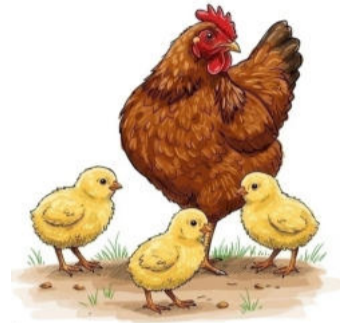
The closing date for applications is Tuesday 21 July 2026

W34243

www.sa.gov.au

FOR SALE

- * DAY OLD CHICK \$6.50,
- * 16 WEEKS POL PULLETS \$26.00,
- * 574 MAGILL ROAD MAGILL,
- *MAGILL GRAIN STORE, 08 8331 8159



COOBER PEDY DRIVE IN JULY MOVIES

4th- The Drama

11th- Goat

18th- Scary Movie 6 (R18+)

25th- E.T (flashback)

31st- Disclosure Day

Gates open at 6pm for a 6:30 start (times subject to change)

Car \$30 (2-7people)

Adult \$15

Student / concession \$10

Child \$5

*children are to be supervised at all times
 * no walk ins under 15 years without parent or guardian



O.M.E. Fuel

Lot 1299 Old Water Tank Rd

Auto Electrician

We offer high quality Auto Electrical and Air Conditioning repairs and installations backed by 30 years of experience with affordable prices!

- # Trucks and Heavy Machinery
- # 4WD
- # Cars and Caravans

CALL on 0401848973

EMERGENCY CONTACTS

WHEN TO CALL 000	WHEN TO CALL 132 500 (SES)
Is your situation life-threatening due to any of the below? • All fires, including bushfire and house fire • Dangerous or life-threatening situations - Police • Health & Medical - Ambulance • Major gas leaks • Accidents where there is fire or the need for medical assistance	Flood or storm assistance: • Serious damage to home • Property at risk of flooding • Tree fallen on car or home

NON-EMERGENCY CONTACTS

Often situations that seem urgent and overwhelming can be dealt with using local services such as a handyman, arborist or local council.

For non-urgent situations visit ses.sa.gov.au or refer to the following numbers:

SES infoline 1800 362 361 Police Non-urgent matters 131 444 Crime Stoppers (report crime anonymously) 1800 333 000	Roads and traffic Accidents resulting in a traffic hazard 131 444 Major arterial roads (dangerous conditions, road hazards and signal faults) 1800 018 313	SA Water Burst water mains 1300 650 950 Sewer blockage or overflow 1300 883 121 Gas leaks 1800 GAS LEAK 1800 427 532	Health & medical Health Direct - free! health advice from trained clinicians 1800 022 222 Mental health emergencies 13 14 65 Poisons Information 13 11 26
---	--	---	---

EMERGENCY 000 131 444 POLICE ASSISTANCE



The Innamingka Races (Gymknana and Motorkhana) are a true outback weekend, bringing together racing, camping, community and a whole lot of character in one of the most unique settings in South Australia.

Save the dates: 29th-30th August 2026

Come for the races, stay for Cooper Creek, the night skies, the pub, the people and the stories you'll still be talking about long after the dust settles.

DISCLAIMER

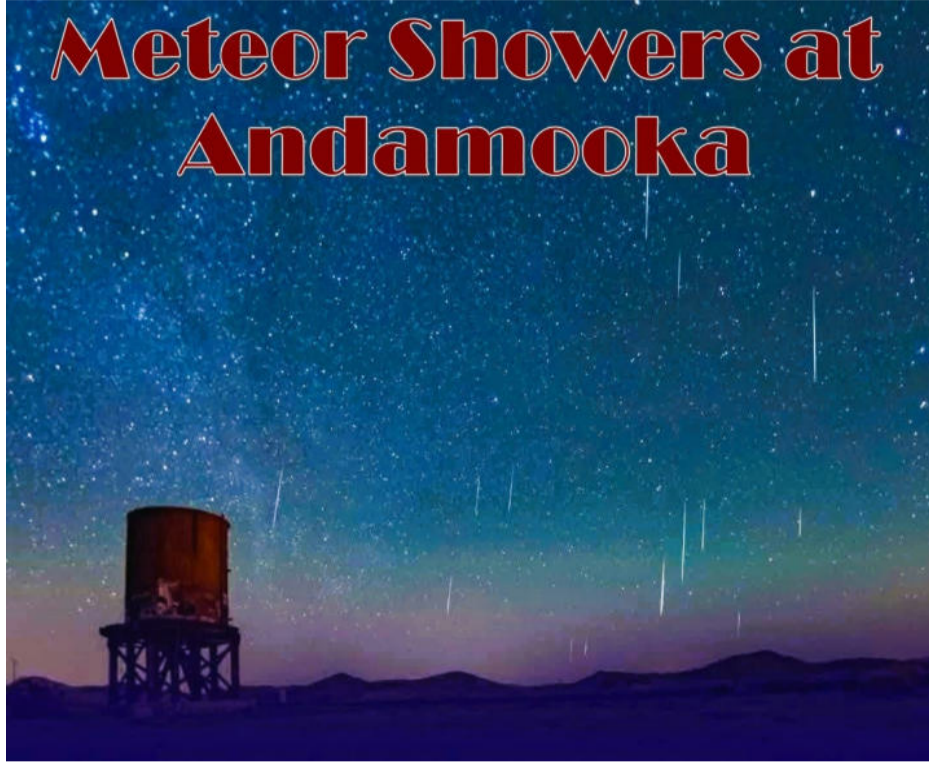
1. Opinions, letters, and Public notices published in the Coober Pedy Regional Times are not necessarily the views of the Editor, or Publisher.
2. The Coober Pedy Regional Times reserves the right to editor of refuse copy in accordance with newspaper Policies.
3. Due to concerns of bureaucratic victimisation, and allegation of bullying, community members may use a pen name, providing full name and details are provided to the Editor.

COOBER PEDY REGIONAL TIMES



Display EGN \$6.75 pcm/pcol (7 col)
 Classi \$8.35 pcm/pcol (4 col)
editor@cooberpedytimes.com
 Tel: 08 86725920

Travelling North - Stuart Highway



Meteor Showers at Andamooka

ANDAMOOKA: Fuel, food, and a stop-over; PLUS:
 Historic Cottages (1930s homes); Opal Noodling (Fossicking);
 Underground Museum (Opal display); Yacht Club (Cafe/Gallery);
 Duke's Bottlehouse Museum & Motel; Stoner's Studio (Sculptures);
 Mining Machinery (Historic); Observatory Tours (Stargazing);
 Lake Torrens (Salt lake); Op-Shop (CWA)

COOPER PEDY DRIVE-IN THEATRE



COOPER PEDY DRIVE IN JULY MOVIES

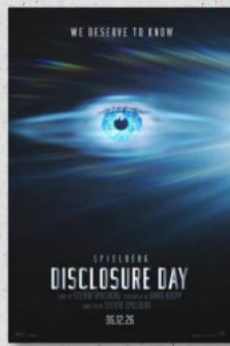
4th- The Drama
 11th- Goat

18th- Scary Movie 6 (R18+)
 25th- E.T (flashback)
 31st- Disclosure Day

Gates open at 6pm for a 6:30 start (times subject to change)

Car \$30 (2-7people)
 Adult \$15
 Student / concession \$10
 Child \$5

*children are to be supervised at all times
 *no walk ins under 15 years without parent or guardian



Saturday 4th July:

The Drama (M)

gates open: 6 pm
 movie starts: 6:30pm

Saturday - 11th July

Goat (PG)

gates open: 6pm
 movie starts: 6:30pm

Andamooka: After Dark Stargazing (Daily)
 The Andamooka Observatory is an off-grid art space/observatory that offers astronomy, opal mining, and tag-along tours. <https://www.facebook.com/andamookaobservatory>

TOURS at COOPER PEDY

Cooper Pedy: The Painted Desert Tour (Every Saturday) with the **Outback Mail Man** who runs 4WD expeditions north to the Arkaringa Hills and the Moon Plains. It's another great way for tourists to see the colorful breakaways without navigating the remote tracks themselves

Twice Daily Tours – Oasis Tourist Park Cooper Pedy

Mornings Town Tour 8.30am
 Late Afternoon – Breakaways Sunset Tour 4.45 pm

NOBLE TOURS - COOPER PEDY



(Duration approx. 4.5 - 5 hours - including pick ups and drop offs)
 The best of Cooper Pedy and the Breakaways in one tour! Experience Cooper Pedy in the comfort of our spacious and air-conditioned 4WD bus.

The tour includes: Visit the tour guide's modern underground house (dugout) the Serbian Underground Church. Dingo Fence; Moon Plains; The spectacular Breakaways; A visit to our private claim in the opal fields (large tunnel formations) for an underground mine tour.

<https://nobletooursaustralia.com.au/new-page>



SAVE THE DATE!

MEET & GREET

07, 08, 26

GYMKHANA & MOTORKHANA

08, 08, 26

Please Refer to our Facebook Page for more information or contact Kelsey on 0438 480 354
 Poster to come Later with more details!

WEDNESDAY

Cfs Training

CFS TRAINING WEDNESDAY EVENING - 6PM at STATION.

Mine Rescue/SES

1st Wednesday of the month 7.30pm, and 2nd & 4th Saturday of the month 9am at Mine Rescue shed

FRIDAYS

CP Shooters Club

See back page for latest program



Italian Club

Italian Club Coober Pedy

Thursday 5-10pm and Friday nights 5 - 1a m.

Greek Charcoal BB



Friday nights at the Greek Hall.

Alcoholics Anonymous

Meet Fridays 7pm at the side of the Catholic Church. If you have a drinking problem and need help. Call 1800222222, Or call Dave on 0409349753

SATURDAYS

parkrun

8am Saturday mornings Town Oval

KIDS CHURCH/CLUB
Catacomb Anglican Church
 Every Sunday at 10 am (40 mins) - church starts at 9:30 am



GOLF 8.30 am

MINE RESCUE/SES

2nd & 4th Saturday of the month 9am

CP SHOOTERS CLUB

See BACK page for latest updates, or Ring John Di Donna on 0427 649 389

CROATION CLUB

Happy Hour 6-7pm



SUNDAYS

CP SHOOTERS CLUB

See BACK PAGE for latest updates Ring John DiDonna on 0427649389

COOBER PEDY RSL

Open Sunday afternoon from 4.00pm; Happy hour and members draw between 5.00pm and 6.00pm

Far North South Australia outback events for June, July, and August 2026 feature a mix of iconic community festivals, race days, and heritage rail journeys.

Afghan Express Heritage Rail Journey: June 20, 2026. Travel along the historic Ghan route from Port Augusta through the spectacular Pichi Richi Pass, hauled by original 1920s steam locomotives.

Farmers & Graziers Squatters Cup: June 21, 2026. Held by the Port Augusta Racing Club, this event features country-style Fashions on the Field, outback races, and live music.

Marree Australasian Camel Cup: June 27, 2026. A classic outback event offering a full day of camel racing, family entertainment, and bush hospitality in Marree.

July 2026

City of Port Augusta Cup: July 5, 2026. The most significant social event on the racing calendar in the region, featuring thoroughbred racing, community barbecues, and hot donuts.

Oodnadatta Bronco Branding will be held on 11 July 2026, making it a spectacular winter season for outback sports.

Wintertime Snow & Shine: July 18, 2026. While technically at the Adelaide Entertainment Centre, it is the state's largest wintertime automotive festival, often drawing travellers heading north or south.



SOUTH AUSTRALIA PUBLIC HOLIDAYS JUNE TO DECEMBER 2026

- JUN 8 King's Birthday** Public Holiday (SA wide)
- OCT 5 Labour Day** Public Holiday (SA wide)
- DEC 24 Christmas Eve** Part-day Public Holiday (SA wide)
- DEC 25 Christmas Day** Public Holiday (SA wide)
- DEC 26 Proclamation Day / Boxing Day** Public Holiday (SA wide)
- DEC 28 Additional Public Holiday for Proclamation Day** Public Holiday (SA wide)

IMPORTANT DATES

- NAIDOC WEEK** 5-12 JULY 2026. Celebrate history, culture and achievements of Aboriginal and Torres Strait Islander peoples.
- REMEMBRANCE DAY** WEDNESDAY 11 NOVEMBER 2026. Lest We Forget.
- OPAL - AUSTRALIA'S PRECIOUS GEM** South Australia produces around 95% of the world's precious opal. Coober Pedy, Opal Capital of the World, is the heart of the opal industry.
- OPAL MINING - A WAY OF LIFE** From deep underground to the open desert, opal mining has shaped communities across South Australia. A unique industry. A proud heritage.

Proud of our history. Rich in culture. Strong communities.

SOUTH AUSTRALIA Where outback spirit shines.

Dates may be subject to change by the SA Government. Always check official sources for the latest updates.



August 2026

The Australian National Bronco Branding Championships are being held at William Creek on 14 & 15 August 2026. Combining the William Creek Campdraft, Bronco Branding, and Cow Work across a weekend of festivities.

Mount Isa Mines Rodeo (August 7-9) and the Broken Hill Mundi Mundi Bash (August 20-22).

Birdsville Races 2026

Monday 31 August 2026 - official weights are declared for the horses.

Thursday 3 September 2026: The official opening event marquee doors open in the evening

Friday 4 September 2026: Day 1 of racing, featuring the Akubra Big Red Day.

Saturday 5 September 2026: Day 2 of racing, featuring the iconic TAB Birdsville Cup Day.

STUART HIGHWAY CORRIDOR - Pit -Stops

Andamooka: A quirky, historical gem where 'noodling' for opals is a way of life. Don't miss the world-class stargazing under some of the darkest skies on the planet Best for an overnight detour to experience underground history and the world's rarest opals.

Kingoonya :A slight detour off the highway, but worth it for the Outback charm and the friendly Kingoonya Hotel.

Pimba: A tiny, remote outback settlement in South Australia, located 441 km north of Adelaide at the junction of the Stuart Highway and the turn-off to Woomera/Roxby Downs. Primarily a key pitstop for travellers, it is renowned for Spud's Roadhouse , offering fuel, food, and accommodation. It also acts as a stop for the Ghan and Indian Pacific trains.

Glendambo is the crucial "halfway" point between Port Augusta and Coober Pedy for fuel and a classic pub meal.

Coober Pedy: Opal Capital of the World: Sleep underground, noodle for opal, explore the breakaways at sunset, and experience a town where the 'fairway' is dirt and the treasures are hidden beneath your feet."

William Creek: Australia's smallest town with a big personality. Located on the world's largest cattle station, and a gateway to scenic flights over the Painted Hills and Kati Thanda - Lake Eyre.

Marree: Where the Oodnadatta and Birdsville Tracks meet. Discover the rich Afghan cameleer history and take senic flights to witness the filling of Lake Eyre, amazing outback wildlife and the mysterious Marree Man from above.

Oodnadatta: Home of the iconic Pink Roadhouse. A must-stop for a 'burger and a photo' before you tackle the legendary red tracks of the deep outback.

Cadney Park Homestead: located 150 km north of Coober Pedy on the Stuart Highway in South Australia, is a remote, family-friendly oasis offering motel-style rooms, cabins, and pet friendly caravan/camping sites. It features a restaurant, bar, swimming pool, and fuel services, making it a popular stop for travellers.

Marla: The essential rest point before the long stretch toward the NT border; great for early morning starts.

OUR LOCAL GROUPS

Updated Local Service Provider Listings

C.P. Police Station
 Malliotis Blvd. Coober Pedy
 (08) 8672 5056; Assistance 131 444;
 Emergency 000; Crime Stoppers 1800 555 677

Coober Pedy Hospital
 Lot 89 Hospital Rd
 Open 24 hours · (08) 8672 5009

Coober Pedy Medical Practice
 Lot 89 McDougal Road
 (08) 8678 9224

iCCnet SA (Remote Health Monitoring)
 Level 1, Administration Building
 1 Tonsley Boulevard, Tonsley SA 5042, Australia
 Tel 7117 0600 (9am to 8pm seven days a week)
 Email: HEALTHFMCIcCnetSA@sa.gov.au

Coober Pedy Area School
 17/18 Paxton Rd. Coober Pedy
 (08) 8672 5077

Umoona Tjutagku Health Service
 Lot 8 Umoona Rd
 (08) 8672 5255

Housing SA
 Lot 334 Hutchison St (Opposite Bank)
 PHONE: 131 299

Centrelink
 LOT 715 Hutchison St. Coober Pedy
 13 24 68

District Council of Coober Pedy
 LOT 773 Hutchison St. Coober Pedy
 (08) 8672 4600

Coober Pedy Tourist Information Cen.
 LOT 773 Hutchison St
 (08) 8672 4600

Umoona Community Council Inc
 Umoona Rd
 (08) 8672 5246

MAP/Sobering Up Centre. Ph: 86723903
 MAP BUS Tues to Sat. 4pm-12am.
 Sobering Up Centre Tues - Sat 4pm - 8am

Umoona Tjitji Tjapu Tjuta Childcare Centre
 Lot 315 Robins Blvd
 (08) 8672 5644

Umoona Aged Care
 Lot 89 Hospital Rd
 (08) 8672 5605

National Indigenous Australians Ag. (NIAA)
 17/18 Paxton Rd. Coober Pedy
 (08) 8672 5077

Far North Health Advisory Council
 C/- Coober Pedy Hospital
 (08) 8672 5009

C.P. Community Correctional Centre:
 Malliotis Blvd. Coober Pedy
 (08) 8672 3091

Uniting Country SA
 Paxton Rd
 1300 067 777

TAFE SA
 Adult education school
 Hutchison St. Coober Pedy
 (08) 8678 9000

Coober Pedy Magistrates Court
 Malliotis Blvd. Coober Pedy
 (08) 8672 5601

Child Abuse Report Line (CARL)
 131478

Aboriginal Family Support Services
 Lot 1991 Aylett Street, Coober Pedy
 (08) 8672 3066

Coober Pedy Retail, Business & Tourism Assoc. Inc

Committee Elected for 2026
 President: George Kountouris
 Vice President: George Russell OAM
 Treasurer: Nick Brellas
 Secretary/Public Officer: Nicky Kountouris Committee
 Members: Irene Spillman, Michael Farkas, Sean Harrison
<https://www.cooberpedy.com/contact-2/>

Coober Pedy Sports & Rec Assoc. Inc

Jordan Riessen- Chairperson
 Gwen Martin - Treasurer Gwen Martin - Secretary
 Jon Fatt-Clifton - Committee member
Email: cpsportsandrecreation@gmail.com
Committee Elected for 2024-2026

Coober Pedy Shooters Club Inc

Committee Elected for 2025/2026
 President Daniel Lamb
 Senior Vice President Stephen Scott
 Junior Vice President John McDermott Secretary
 John Di Donna
 Treasurer Suzanne Bunker
 Public Relations Greg Sparrow **Committee Members**
 Robert Gigos; CharissaLamb; Phil Gerschwitz;
 Jesse Manfred
Contact Secretary: 0427 649 389

Coober Pedy RSL Sub-Branch

President: Rod Hagel
 Vice President: Mick Cox
 Secretary: Kingsley Kammermann
 Treasurer: Miriam Kammermann
 Committee Members:
 Rayleen Hagel Roz Jazepczyk
 Michael Stocks
 Edward Street COOBER PEDY
 Email: CooberPedy@rslsa.org.au

Coober Pedy Motor Club - Speedway

Executive Committee Members
 Acting President - Mick Frakas Mob
 0439596489
 Acting Vice President - Verdun Myat
 Secretary - Fiona Scutter
 Treasurer - Irene Spillmann
 General enquires 0428356669

Coober Pedy Community Alliance

Chairperson: John Di Donna
 Vice Chair: George Rosewarne
Committee members
 Teena Rosewarne (JP)
 (Media Officer) Margaret Mackay
 Email: cpca.chairperson@gmail.com
 Meetings held monthly at Italian Club.



Coober Pedy Historical Society Inc

Committee Elected 20/10/2025
 Chairperson: Trish Turner Secretary: Jenny Davison
 Treasurer: Sue Britt
 Public Officer: Judy Harper
Contact: cooberpedyhs@gmail.com

DUSTY RADIO INC

Committee 2025
Chairperson
 Secretary: Patsy Anne Noble
 Treasurer:
 Public Officer: Patsy Anne Noble
 Social Media Officer:
 Committee member:
 Committee member:
<https://www.dustyradio.com.au/>



COOBER PEDY MINERS ASSOC.

Coober Pedy SA 3723
Committee Elected for 2025/26
 President: Matt Graham, Secretary:
 Treasurer: Nicko Farantouris
Committee Members: Rod Wells, Mish Blanus, Mike Eakins, Steve Perkins, Lachlan Blanchford, Bailey Stevens

Coober Pedy Opal Fields Golf Club Inc.

Coober Pedy SA 3723
Committee Elected for 2025
 Club Captain: Stephen Borrett
 President: Chevahn Hoad
 Vice President: Miro Markovic
 Secretary: Nadine Lewis
 Treasurer:
 Grounds Keeper: Dylan Lewis Bar Manager:
 Stephen Borrett
 Committee Members: Sue Britt, Bob Martin
Contact: cooberpedygolfclub@gmail.com

Coober Pedy Area School Governing Council 2026

Maurice Saah (Principal)
 Elected Staff Representative: Veronika Witham
 Elected Parent Members: Sabrina Troisi; Jo Anne Vanajek; Roger Vanajek; Ariane Montminy-Roberge; Sarah Rethus; Rukmalee Dissanayake
 Elected Community Member; Gary Herdegen
 Student Representatives; Satkirat Kaur; Mitchell Hoad
 Election of office holders (Chairperson, Secretary and Treasurer) will take place on 16th June, 2026

Outback Open Air Cinema Inc (Coober Pedy Drive In) 2025

Chantelle Bamford Chairperson
 Lyndal Price Deputy Chairperson
 Tanya Lauder Secretary/Treasurer Gemma Hoad-
 Committee member
 Mitchell Hoad - Committee member
 Clydine Carboni - Committee Member
 Kaysy Clet de Leon-Committee member
 Gary Herdegen (Council) Committee Member
<http://www.cooberpedydrivein.org.au/documents.html>

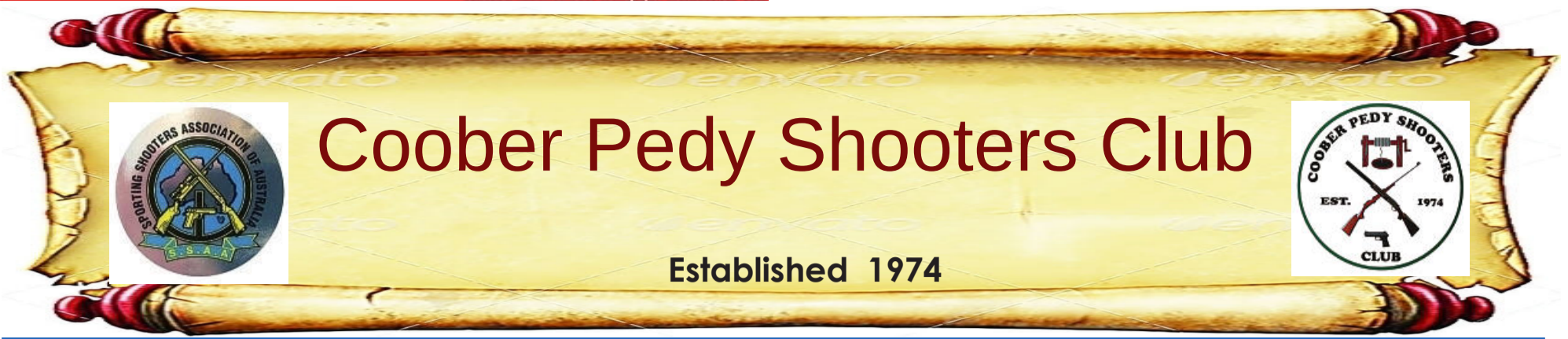
Coober Pedy Italian Club Inc

Committee Elected 18/10/2025
 Brett Smith President,
 Nicko Farantouris Vice Pres
 Deanna Smith Secretary,
 Cat Bell (Treasurer)
 Tara Jane Smith,
 Izzy Zelenko,
 Nick Farantouris (Jr)
 Karen Harvey,
 Rosslyn Jazepczyk;
 Peter Cech,
 Mitchell Rosewarne

Coober Pedy GEM TRADE SHOW

Committee Elected 18-12-2024
 President - Corey Edwards
 Secretary - Tara-Jane Smith
 Treasurer – Emily Pennisi
Committee members
 Catherine Bell,
 Rachel Crothers,
 David Hammermeister





Coober Pedy Shooter Club welcomes all new members, visitors and Sponsors

If you don't have a firearm, come along & our members will assist you with all enquiries.

Minimum age for shooting at the club is 10 yrs (Rifles and Air Pistol)
 & 10 yrs (Pistols).

Starting Times 9:00 AM
Saturday — Pistols
IPSC

<i>27 June</i>
<i>4 July</i>
<i>11 July</i>
<i>18 July</i>
<i>25 July</i>

- DISCIPLINES INCLUDE:**
- ◆ Air Rifle/ pistol
 - ◆ IPSC
 - ◆ ISSF
 - ◆ Rifle Metallic Silhouette
 - ◆ Combine Service
 - ◆ Black Powder
 - ◆ Service pistol
 - ◆ Shotgun
 - ◆ Steel Challenge
- Coober Pedy Shooter's Club supports:
- ◆ Darts
 - ◆ Archery

Starting Time: 9:00 AM
Sundays
50 m Benchrest
Rapid Fire Match

<i>28 June</i>
<i>5 July</i>
<i>12 July</i>
<i>19 July</i>
<i>26 July</i>



MEMBERSHIP Renewal Now Due 2026

- Single Membership \$ 100.00**
- Couple Membership \$150.00**
- Family Membership \$ 200.00**
- Affiliate Membership \$20.00**



SSAA MEMBERSHIP DUE NOW

Sign-up online
<https://ssaasa.org.au>.... Or at the club

Any Enquires regarding Membership, sponsorships, donations, or shooting, please contact

Robert Gigos - - Email cpsc.treasurer@gmail.com

John Di Donna - Mobile 0427 649 389 - Email. cpsc.secretary@gmail.com



The Coober Pedy Shooter's Club is affiliated with the Sporting Shooters Association of Australia (South Australia) Incorporated.
<https://ssaasa.org.au>

